

Community Conversation: Is it time to change the governance structure of Boulder County?

Presented by



www.lwvbc.org

League of Women Voters of Boulder County

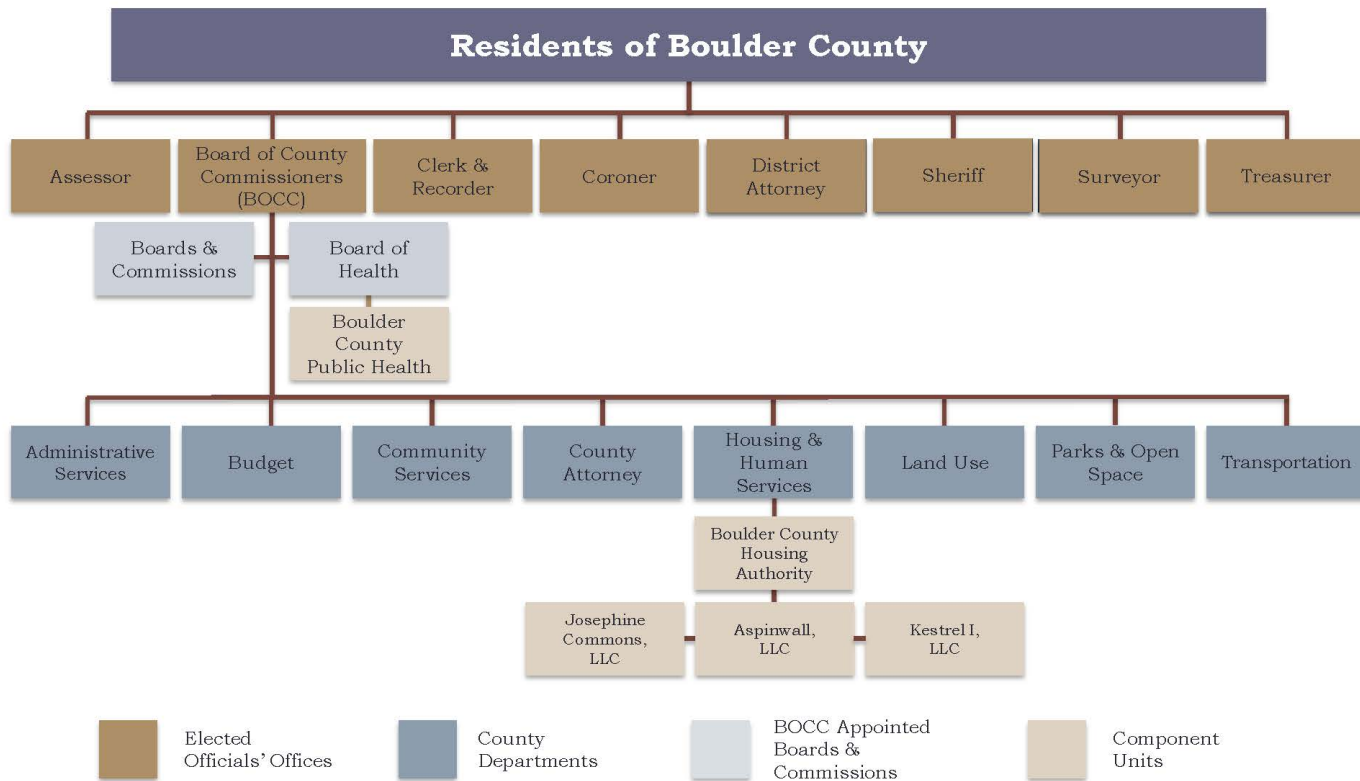
We support increasing the number of
Boulder County commissioners from
Three to Five because:

- Matter of good governance
- Better representation of County voters

AGENDA

- Introduction-Peggy Leech*
- Commissioners' Role-Michelle Krezek
- Current Structure-Mary Raynolds*
- 3 vs 5 Commissioners-Gaythia Weis*
- Options for Electing 5-Celeste Landry*
- Petition-Gary Cooper
- Discussion

* LWVBC Member



COUNTY OFFICES

Administrative Services

District Attorney's Office

Surveyor

Assessors' Office

Housing and Human Services

Transportation

Clerk and Recorder's Office

Land Use

Treasurer

Commissioners' Office

Parks and Open Space

Community Services

Public Health

Coroner's Office

Public Trustee/Foreclosures

County Attorney

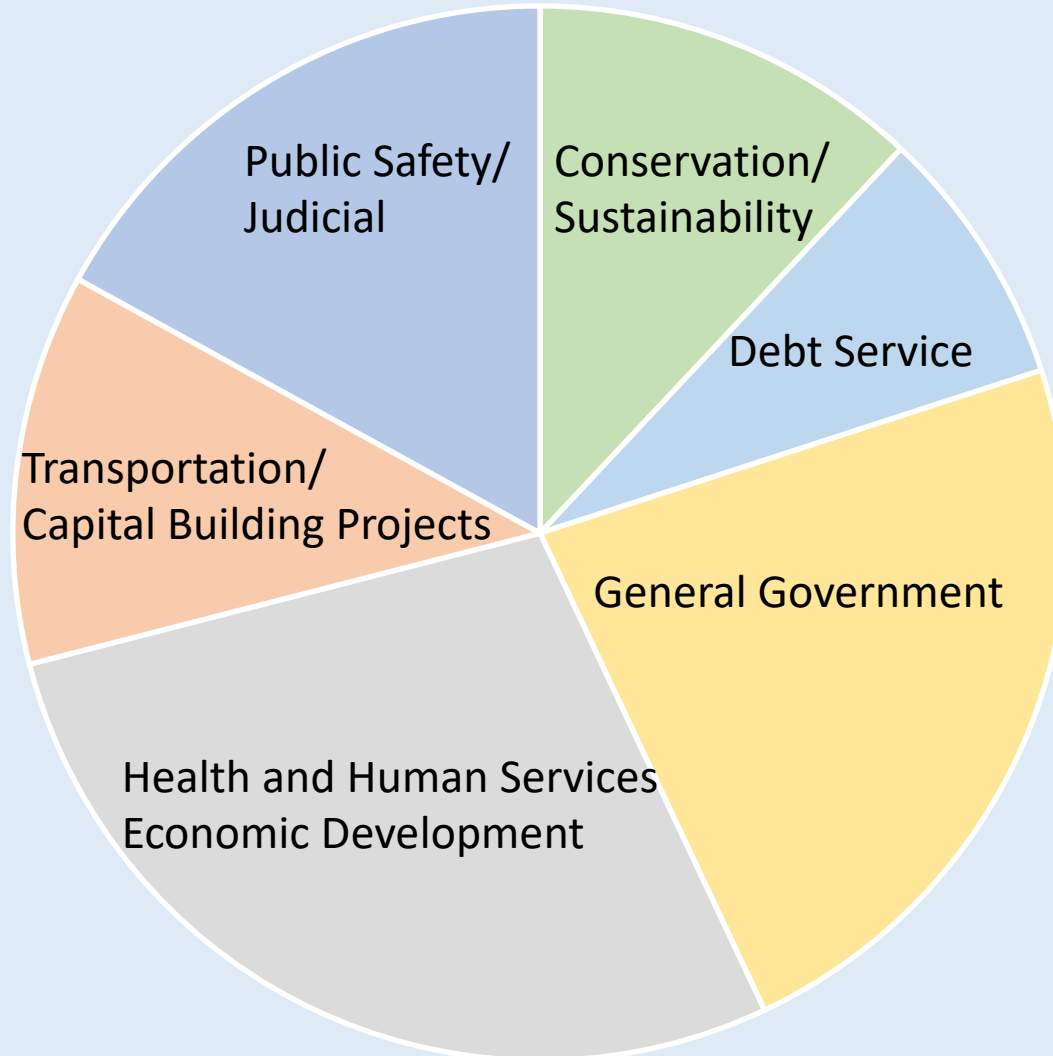
Sheriff's Office

**ENTITIES IN BLACK ARE UNDER COUNTY COMMISSIONERS WHO
ARE EXECUTIVE AGENTS OF THE STATE
ENTITIES IN RED ARE UNDER SEPARATELY ELECTED COUNTY OFFICIALS
OR STATE OFFICIALS (DA)**

COUNTY EXPENDITURES

\$433 Million Budget

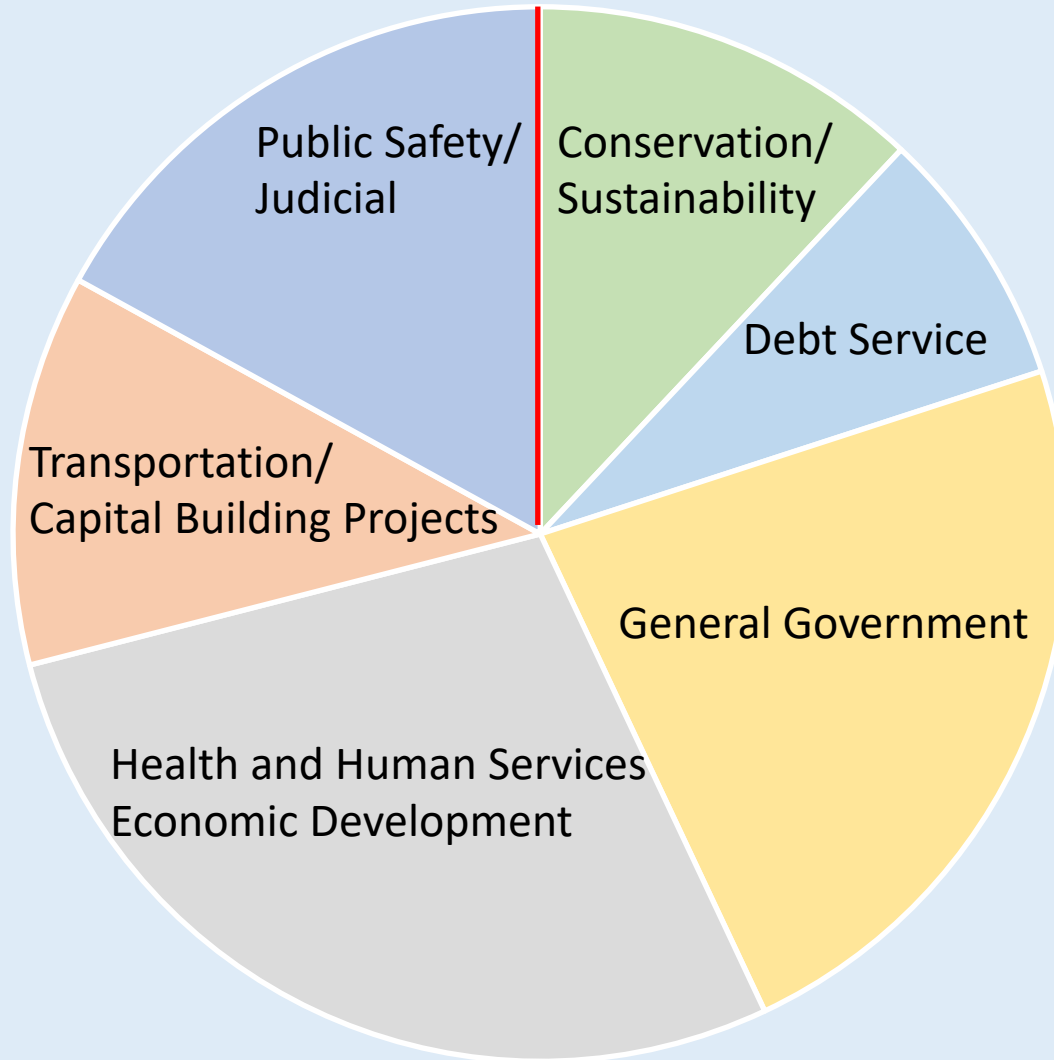
Commissioners Oversee About $\frac{3}{4}$ of the Expenditures



COUNTY EXPENDITURES

COST FOR ADDING TWO COMMISSIONERS:

~0.1% ANNUAL BUDGET



EFFECTIVE GOVERNANCE

- WORKLOADS AND EXPECTATIONS OF COMMISSIONERS
- EFFICIENCY: DISTRIBUTION OF DECISION MAKING
- COVERAGE: QUORUM AND VACANCY

EFFECTIVE GOVERNANCE

- STEEP LEARNING CURVE FOR NEW COMMISSIONERS
- GROUPTHINK
- SOCIAL PSYCHOLOGISTS: 5-15 PEOPLE OPTIMAL FOR DECISION MAKING

HOW IS THE VOTING PUBLIC BEST REPRESENTED?

- COUNTY-WIDE ACCOUNTABILITY
- RESPONSIVENESS TO CONSTITUENTS/ACCESSIBILITY
- OUTREACH AND CAMPAIGNING
- DIVERSITY: IDEOLOGY, PERSPECTIVES, BACKGROUND
AND EXPERIENCES

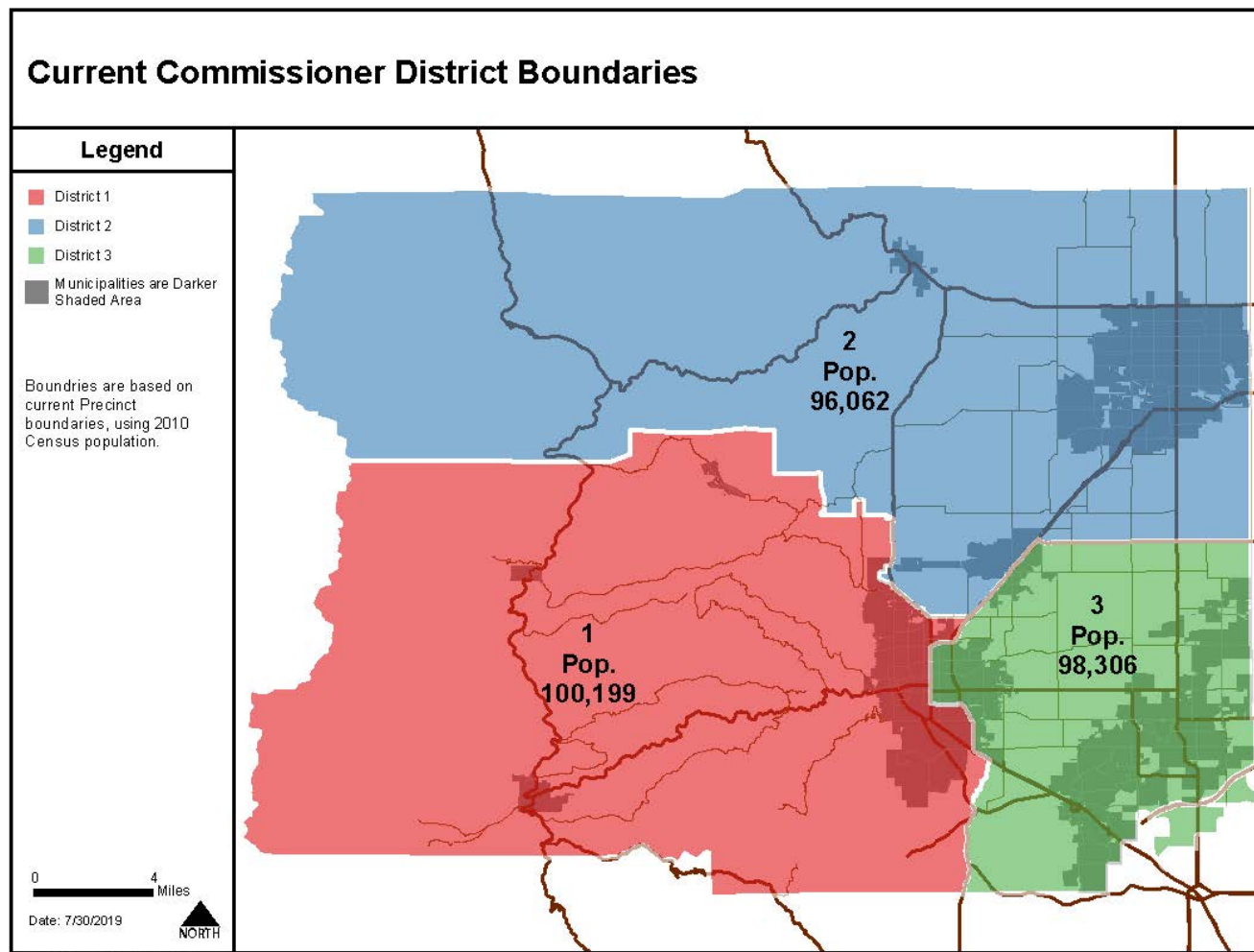
District Maps - Disclaimers

- These maps have been produced at the request of the League of Women Voters for illustrative purposes only.
- The production of these maps in no way represent an endorsement by the Boulder County Board of County Commissioners to move from three to five Commissioners, nor an endorsement of any specific district configurations.
- The Commissioners have not made any decision to consider placing this issue on a future ballot and the production of these maps is only intended to assist the public in understanding and evaluating the proposal to increase the Board to five members.
- The current three district map will change after the 2020 census data is available.

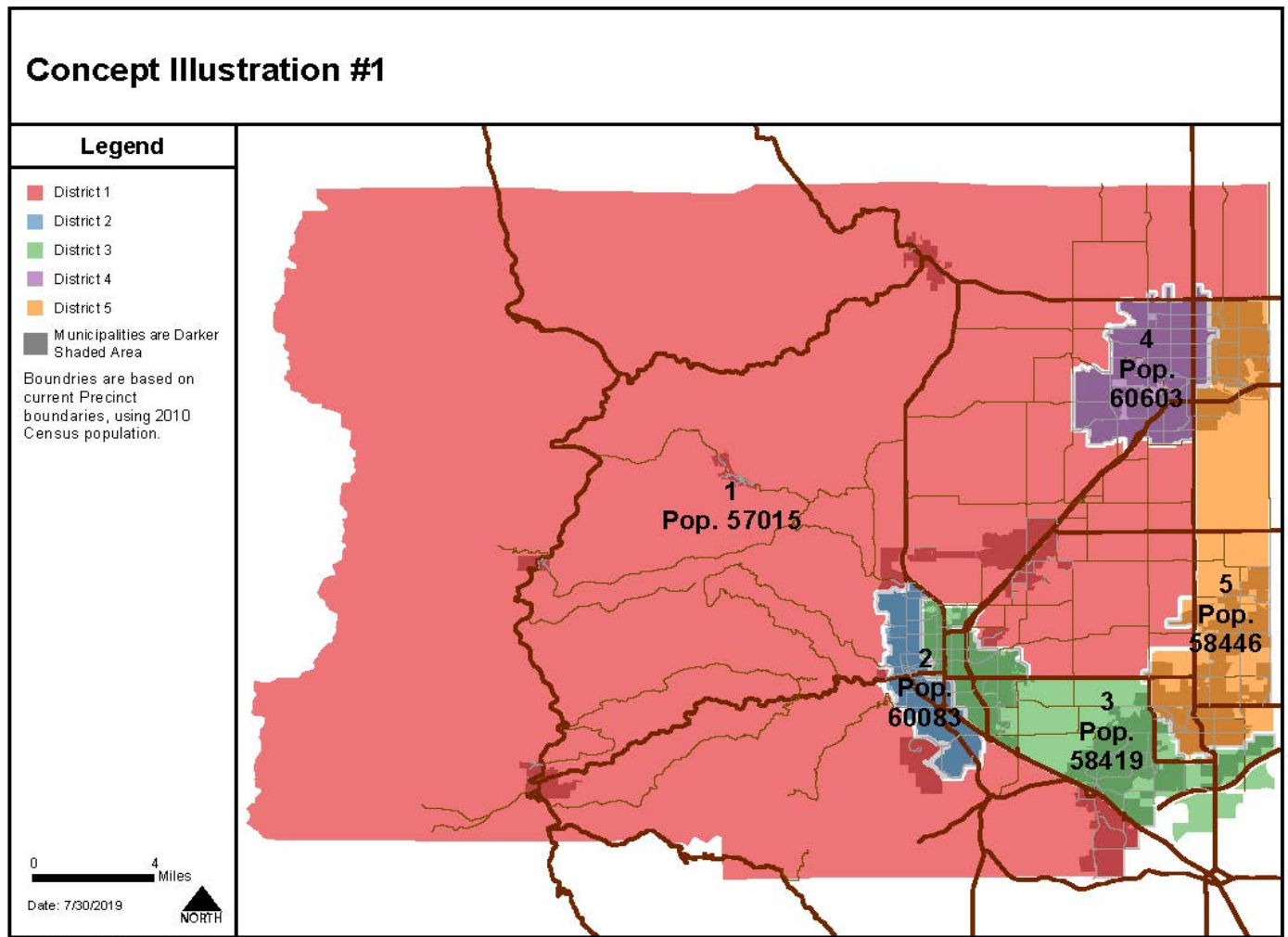
District Maps - Disclaimers

- These maps are based on population and precinct data from 2010. As such, any maps drawn for a future ballot issue would be based on more recent population data which will change the district boundaries.
- The total population for each of the districts needs to be relatively consistent, these maps were drawn such that the population does not differ by more than 5%. Given the 2010 population, each district should have approximately 59,000 residents.
- The unincorporated plains area and mountain population, including the incorporated areas of Nederland, Ward and Jamestown, do not have enough population to form one district.
- Both Boulder and Longmont are too populous to be in one district.

Based on 2010
Population data
and precinct
boundaries



Based on 2010
Population data
and precinct
boundaries



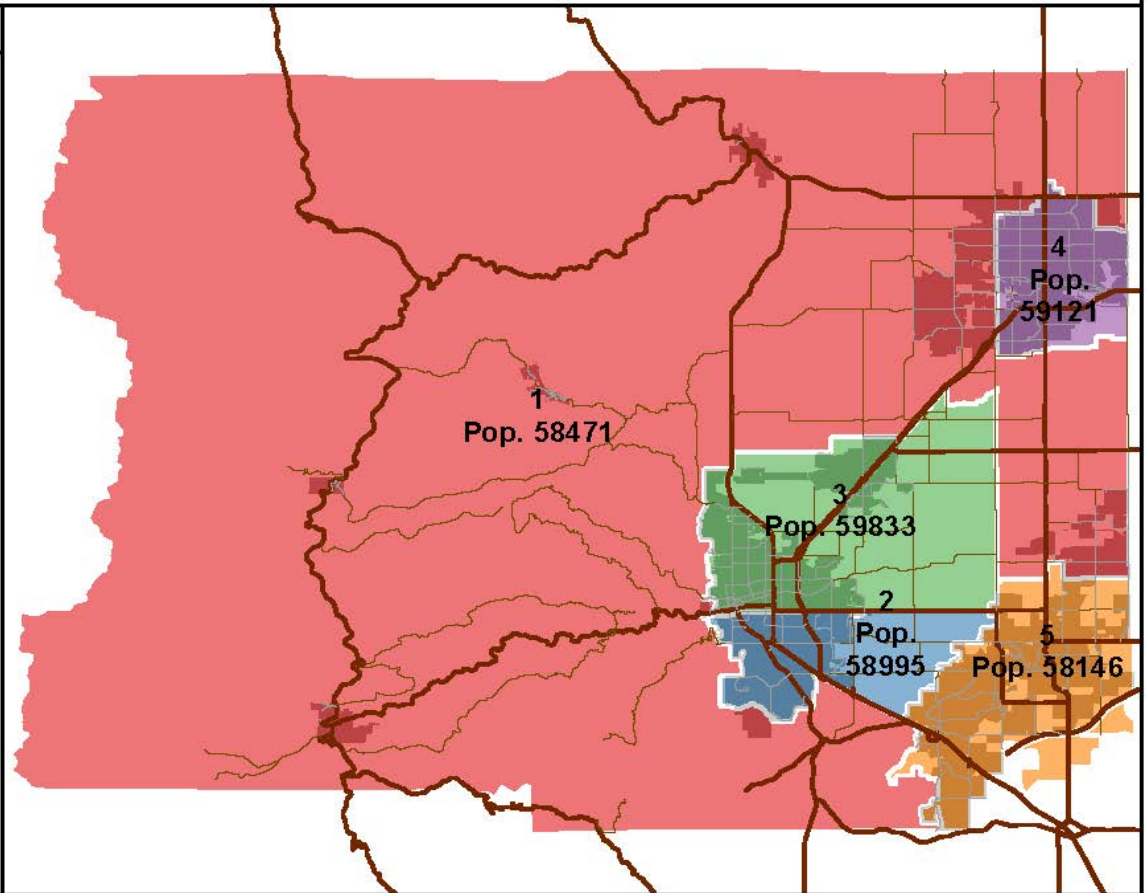
Based on 2010
Population data
and precinct
boundaries

Concept Illustration #2

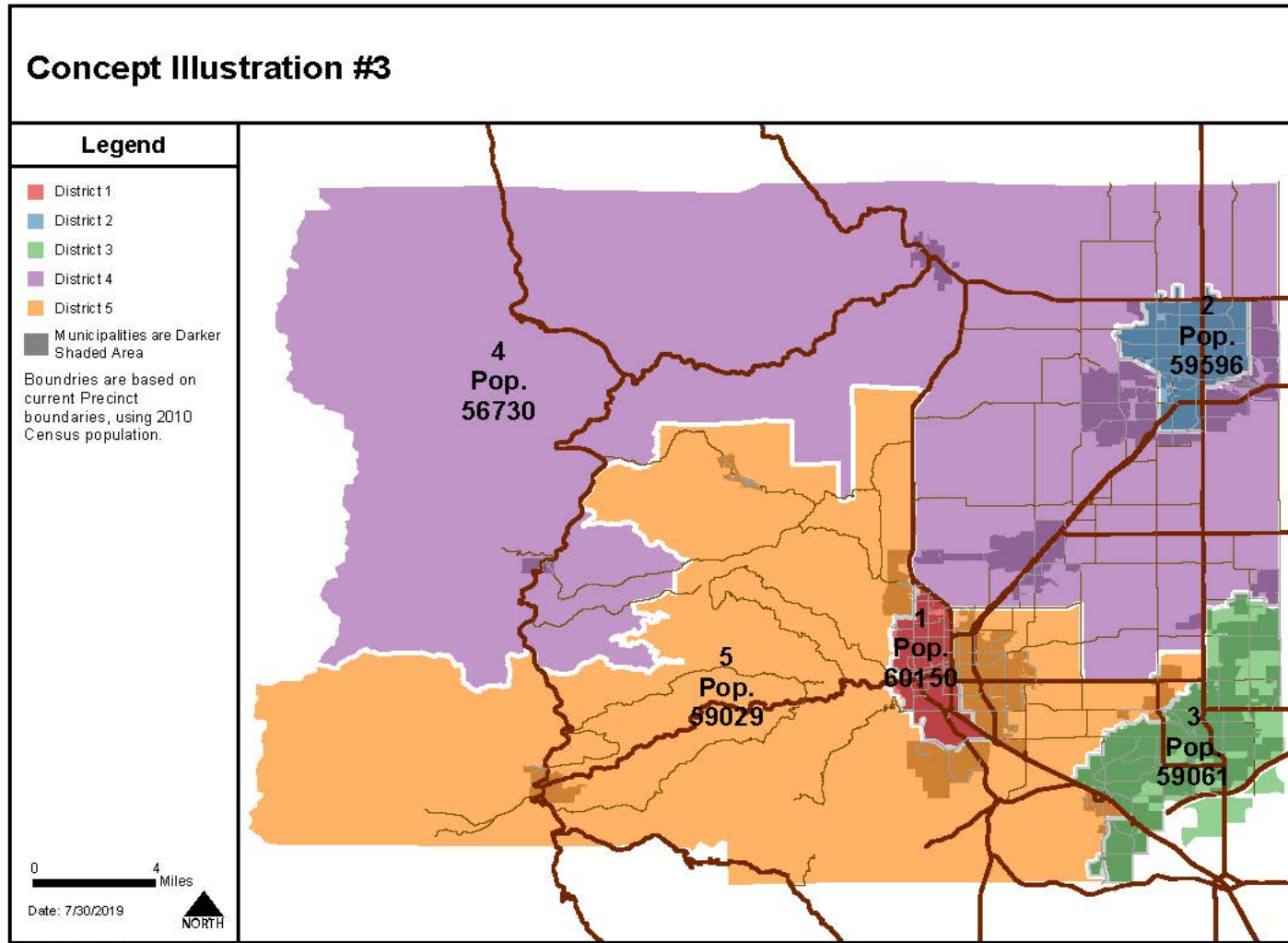
Legend

- District 1
 - District 2
 - District 3
 - District 4
 - District 5
 - Municipalities are Darker Shaded Area
- Boundries are based on
current Precinct
boundaries, using 2010
Census population.

0 4 Miles
Date: 7/30/2019
NORTH



Based on 2010
Population data
and precinct
boundaries



4 Options in Statute to Elect **5** County Commissioners

The ballot question must include
at least TWO of the options.

Option A: 5 Districts, but Elected At-Large

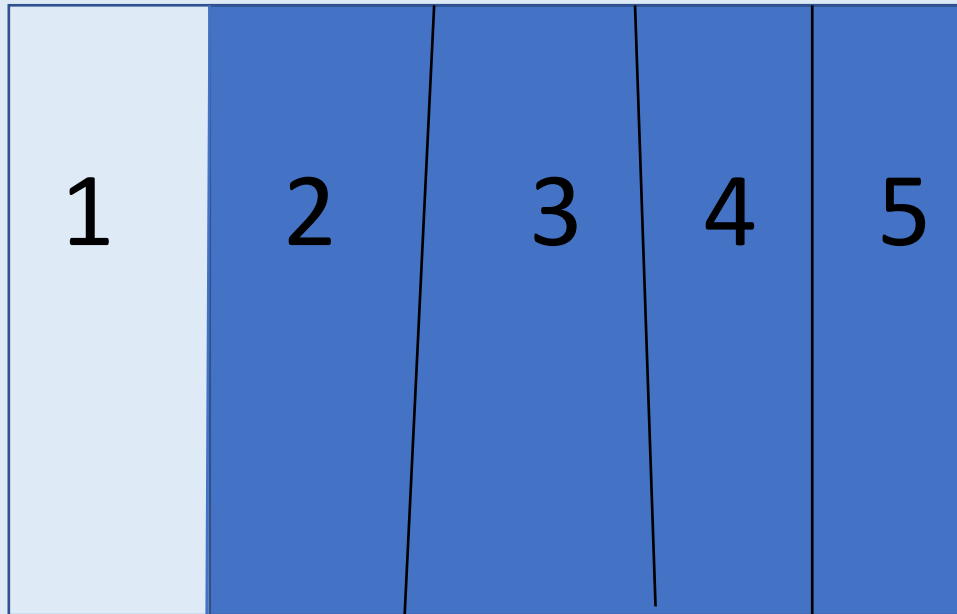
**Vote in 5 contests, some every 2 years –
Similar to the current 3-comm'r board**

1	2	3	4	5
---	---	---	---	---

Option B: 5 Districts, Elected by District

Vote in 1 contest every 4 years

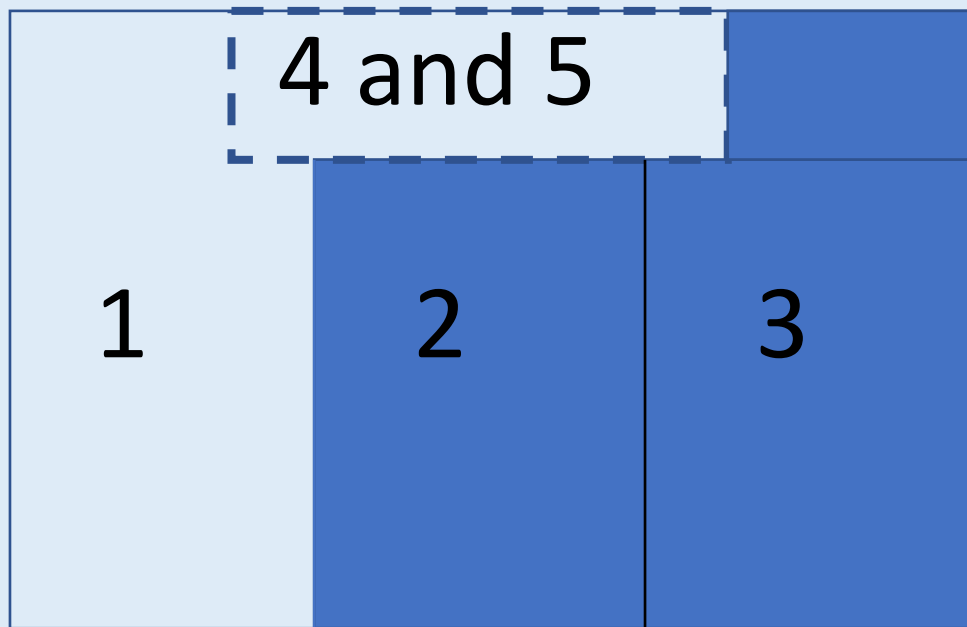
Petition – Option 1



Option C:

3 Districts + 2 Elected At-Large

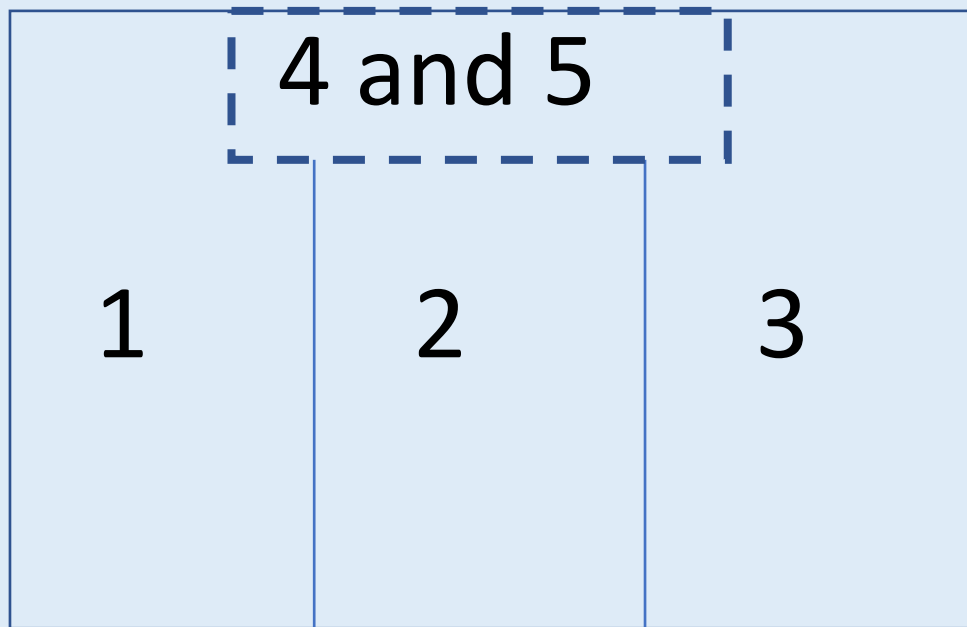
Vote in 3 contests, at least 1 every 2 years
Petition – Option 2



Option D:

3 Districts, All 5 Elected At-Large

**Vote in 5 contests, some every 2 years –
Add 2 at-large comm'rs to current board**



Ballot Question

Two ways to get on the ballot:

1) petition

**2) referred by the county
commissioners**

**What happens if we have
competing ballot measures?**

PETITION: GARY COOPER

Do not sign this petition unless you have read or have had read to you the proposed initiative or referred measure or the summary in its entirety and understand its meaning.

Summary: This is a citizen-initiated petition to place on the 2020 General Election ballot the question of whether to increase the membership of the Boulder County Board of County Commissioners from three to five members and, if membership is to be increased, how to elect the five members.

The full text of the proposed initiated measure is as follows:

Ballot Question
(vote Yes or No)

Shall the membership of the Boulder County Board of Commissioners be increased from a three member board to a five member board?

☐ Yes ☐ No

If the membership of the Boulder County Board of Commissioners is increased from a three member board to a five member board, by what method shall the Boulder County Board of Commissioners be elected?

(Vote for One)

☐ Five commissioners who shall be residents of districts and who shall be elected only by the voters resident in the district from which the member runs for election.

☐ Three commissioners who shall be residents of districts and who shall be elected only by the voters resident in the district from which the member runs for election and two county commissioners elected by voters of the whole county.

The following persons represent the proponents in all matters affecting the petition and are persons to whom information concerning the petition must be mailed.

Gary Cooper	Bruff LeVan
327 Lodgewood Lane	3974 Campo Ct.
Lafayette, CO 80026	Boulder, CO 80301
303-465-2810	720-621-2054

THANK YOU FOR ATTENDING



www.lwvbc.org



LWVBC Community Conversation – Aug 8 and 13, 2019 – County Gov't